

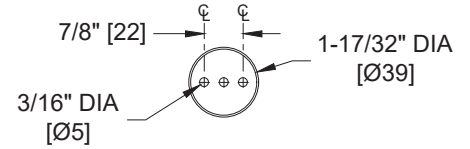
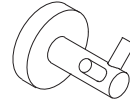
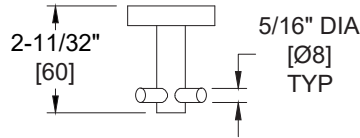
## Double Robe Hook

Specialty Accessories

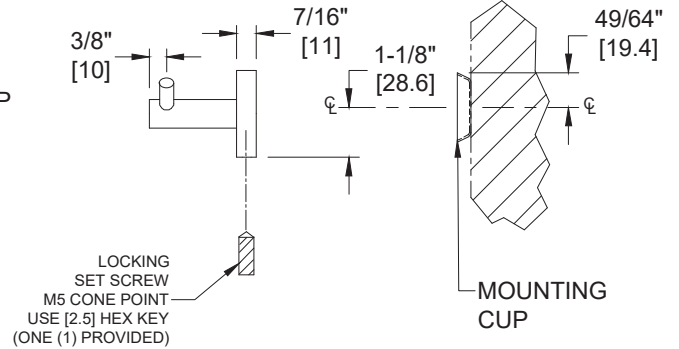
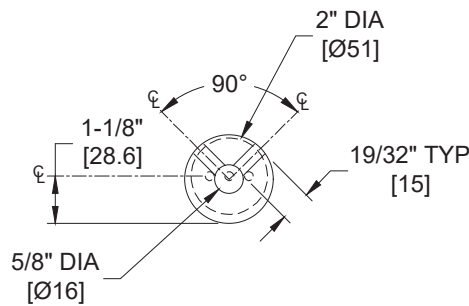
MasterFormat Section 10 28 13



Scan for  
Information



MOUNTING CUP



MOUNTING CUP

## SUSTAINABILITY/LEED

MR 4.1 (1) MR 6 (1) EQ 4.2 (1)  
MR 4.2 (1) EQ 4.1 (1) EQ 4.4 (1)

**NOTE:**  
ALL DIM'S INCH [MM]  
ILLUSTRATION FOR REF ONLY AND NTS

## PRODUCT OVERVIEW

Two hooks, set apart at 90° on center, extend 1-31/32" [50] from wall or door. Suitable for robes, clothing or small bags. Satin finish stainless steel.

## KEY FEATURES & SPECIFICATIONS

- Double Hook
- Type 304 Stainless Steel - Satin Finish
- Solid rod post type 304 stainless steel
- 19 Gauge Mounting Cup

**OPERATION & MAINTENANCE**

Hook is suitable for robes or clothing and small carry bags.

**TECHNICAL INFORMATION / PRODUCT PROPERTIES**

Property	Value
Dimensions	2" W x 2" H x 2-11/32" D [51 x 51 x 60]
Construction	Type 304 Stainless Steel - Satin Finish
Mounting	Surface Mounted
Capacity	N/A

**INSTALLATION**

Surface mount unit to door back or finished wall with two (2) M4x39 (#6 x 1-1/2") pan head self-threading screws (provided) through holes provided in mounting cup into plastic wall anchors (provided) or other suitably prepared mountings (by others) or other suitable mounting hardware (by others) to suit door or wall conditions. Clip flange onto mounting cup and tighten setscrew (provided) to lock it in place. For compliance with 2010 ADA Accessibility Standards install unit with top of hook 48" [1219] maximum Above Finished Floor (AFF) if clear floor reach is provided. For general utility install hook with centerline of mounting cup 68" [1727] AFF.

**ADDITIONAL INFORMATION****WARRANTY**

One (1) Year from date of Invoice