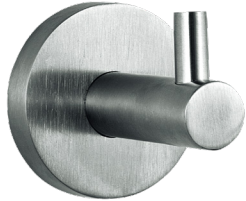


Single Robe Hook

Specialty Accessories

MasterFormat Section 10 28 13

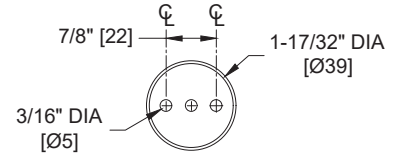
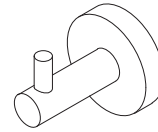
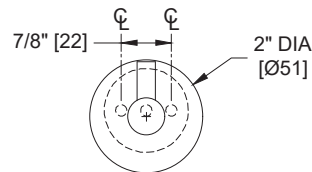
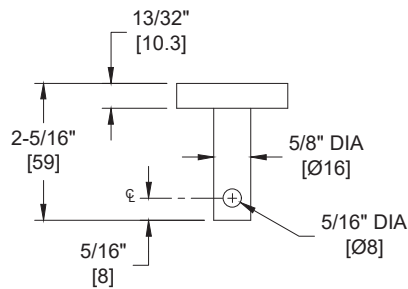


Scan for
Information

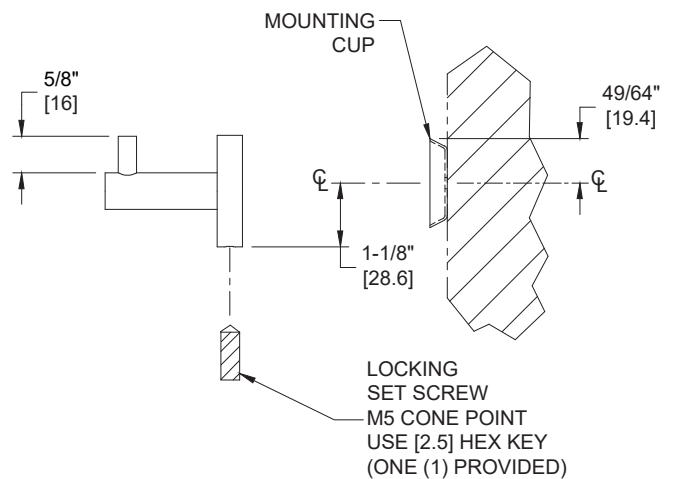


SUSTAINABILITY/LEED

MR 4.1 (1) MR 6 (1) EQ 4.2 (1)
MR 4.2 (1) EQ 4.1 (1) EQ 4.4 (1)



MOUNTING CUP



NOTE:
ALL DIM'S INCH [MM]
ILLUSTRATION FOR REF ONLY AND NTS

PRODUCT OVERVIEW

Extends 2-5/16" [59] from wall or door. Suitable for robes, clothing or small bags. Satin finish stainless steel hook.

KEY FEATURES & SPECIFICATIONS

- Single Hook
- Type 304 Stainless Steel - Satin Finish
- Solid bar post type 304 stainless steel
- 19 Gauge Mounting Cup
- Solid rod pin type 304 stainless steel

OPERATION & MAINTENANCE

Hook is suitable for robes or clothing and small carry bags.

TECHNICAL INFORMATION / PRODUCT PROPERTIES

Property	Value
Dimensions	2" W x 2" H x 2-5/16" D [51 x 51 x 59]
Construction	Type 304 Stainless Steel - Satin Finish
Mounting	Surface Mounted
Capacity	N/A

INSTALLATION

Surface mount unit to door back or finished wall with two (2) M4x39 (#6 x 1-1/2") pan head self-threading screws (provided) through holes provided in mounting cup into plastic wall anchors (provided) or other suitably prepared mountings (by others) or other suitable mounting hardware (by others) to suit door or wall conditions. Clip flange onto mounting cup and tighten setscrew (provided) to lock it in place. For compliance with 2010 ADA Accessibility Standards install unit with top of hook 48" [1219] maximum Above Finished Floor (AFF) if clear floor reach is provided. For general utility install hook with centerline of mounting cup 68" [1727] AFF.

ADDITIONAL INFORMATION

WARRANTY

One (1) Year from date of Invoice