



Simplicity Collection Paper Towel Dispenser & Waste Receptacle – Matte Black Powder Coated – Surface Mounted

Paper Towel Combination Units

Simplicity

MasterFormat Section 10 28 13



Scan for
Information

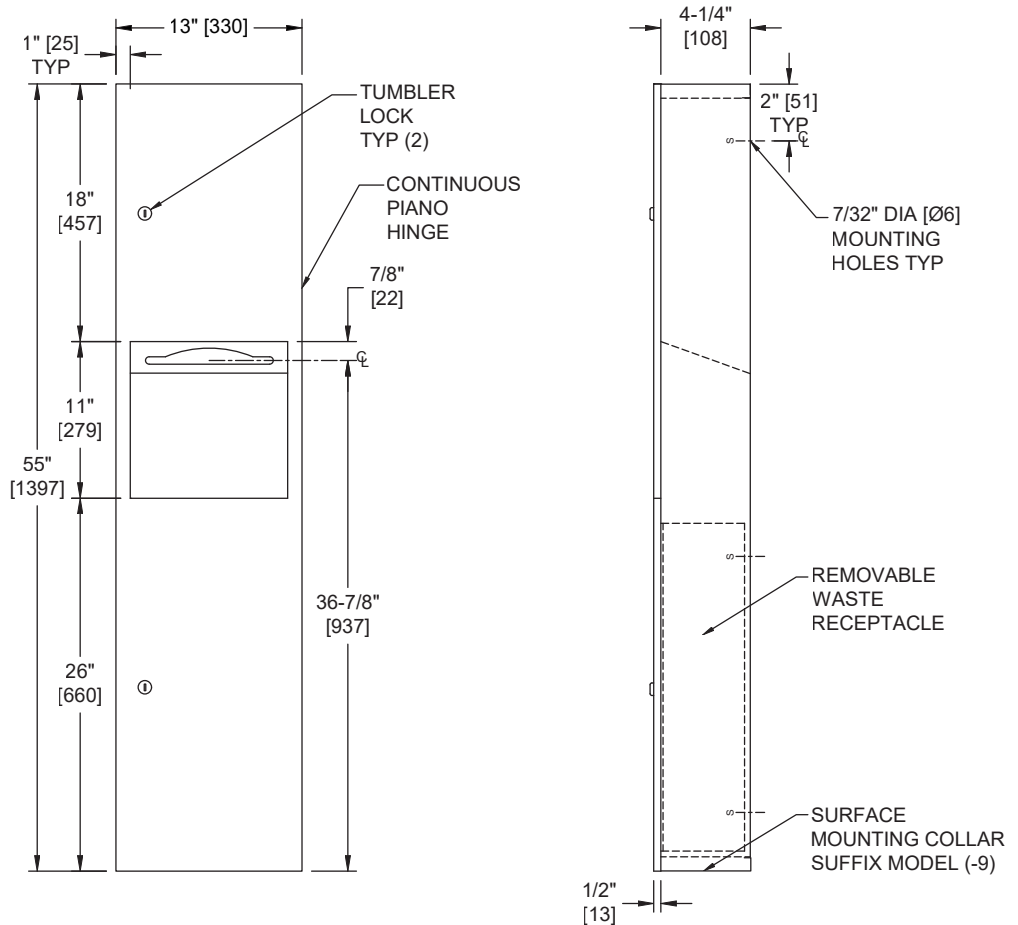


SUSTAINABILITY/LEED

MR 4.1 (1) EQ 4.1 (1)

MR 4.2 (1) EQ 4.2 (1)

MR 6 (1) EQ 4.4 (1)



NOTE:
ALL DIM'S INCH [MM]
ILLUSTRATION FOR REF ONLY AND NTS
FOR CLEANING INSTRUCTIONS SEE APPROPRIATE SECTIONS IN
PRODUCT CARE & MAINTENANCE BULLETIN (PCM) ON ASI WEBSITE

PRODUCT OVERVIEW

Dispenses 600 C-fold or 800 multi-fold paper towels. 4.2 gal. (16 L) stainless steel waste receptacle. Door held closed with two (2) tumbler locks. Waste receptacle has a rolled edge finger hole for easy servicing. Surface mounted with stainless steel collar. Paper towels are manually withdrawn through dispensing slot. Unit will continue to feed properly when reloaded with a partial load in place. Refill dispenser by unlocking door and replacing towels for an empty or partially empty unit. Locking full-face door over compartments prevents unauthorized access or removal.

KEY FEATURES & SPECIFICATIONS

- Seamless construction, crisp lines and minimalistic design
- Concealed multi-staked hinge - 3/16" diameter [Ø5]
- Type 304 Stainless Steel - Matte Black Powder Coated
- Door 18 gauge Cabinet 20 gauge
- Surface Mounted - w/ -9 Collar
- 600 C-Fold or 800 Multi-Fold / 4.2 Gal. (16.0 L) Waste Capacity

OPERATION & MAINTENANCE

Towels are self-feeding until supply is depleted. Unit may be reloaded with a partial load in-place and will continue to feed properly. Waste receptacle is emptied manually on a cycle determined by maintenance needs. Locking door prevents unauthorized access or removal, Two (2) tumbler locks.

TECHNICAL INFORMATION / PRODUCT PROPERTIES

Property	Value
Dimensions	13" [330] W x 55" [1397] H x 4-3/4" [121] D
Construction	Type 304 Stainless Steel - Matte Black Powder Coated Concealed multi-staked hinge - 3/16" diameter [Ø5]
Mounting	Surface Mounted - w/ -9 Collar
Capacity	600 C-Fold or 800 Multi-Fold / 4.2 Gal. (16.0 L) Waste Capacity

INSTALLATION

Surface mount and secure unit to wall with four (4) #10 self-threading screws (by others) through mounting holes in cabinet back. For compliance with 2010 ADA Accessibility Standards mount unit with centerline of towel outlet 48" [1219] maximum Above Finish Floor (AFF). For general utility the unit should be installed with its bottom edge 16-3/4" [425] AFF. SM collar is installed on cabinet prior to mounting on wall following procedure as described on SM Collar Data Sheet.

WARRANTY

One (1) Year from date of Invoice