

**Paper Towel Dispenser & Waste Receptacle - Recessed - 18 Gal.**

Paper Towel Combination Units

Traditional

MasterFormat Section 10 28 13



Scan for  
Information

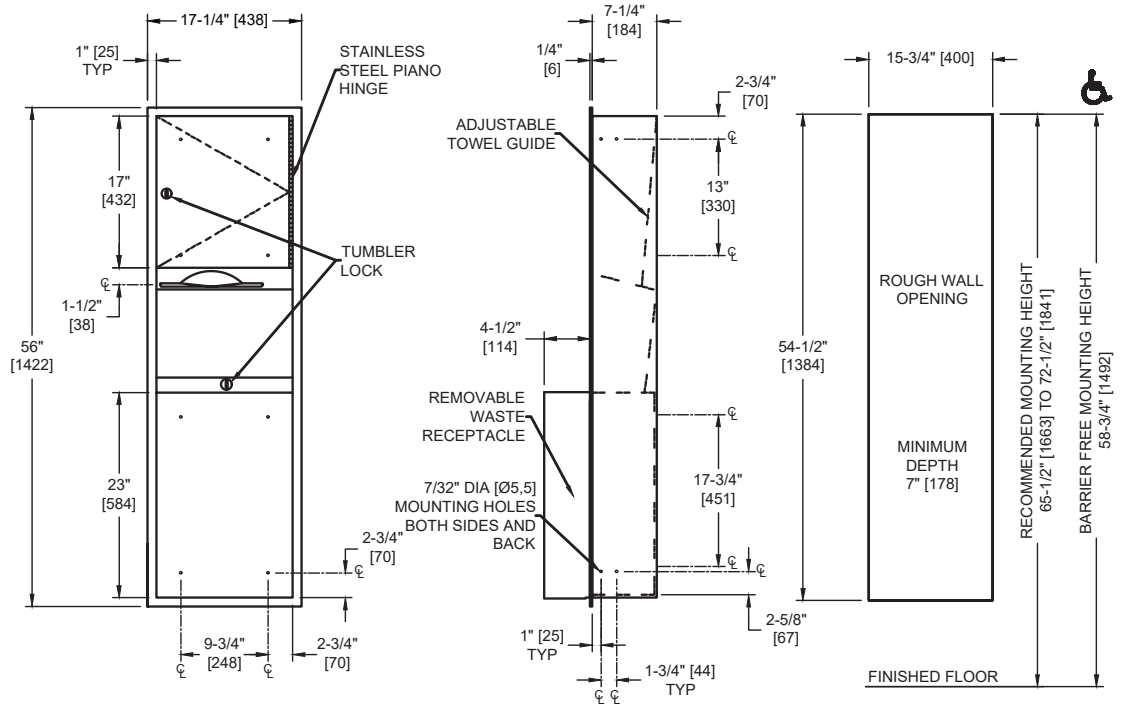


**SUSTAINABILITY/LEED**

MR 4.1 (1) EQ 4.1 (1)

MR 4.2 (1) EQ 4.2 (1)

MR 6 (1) EQ 4.4 (1)



**NOTE:**  
ALL DIM'S INCH [MM]  
ILLUSTRATION FOR REF ONLY AND NTS  
FOR CLEANING INSTRUCTIONS SEE APPROPRIATE SECTIONS IN  
PRODUCT CARE & MAINTENANCE BULLETIN (PCM) ON ASI WEBSITE

**PRODUCT OVERVIEW**

For compliance with 2010 ADA Accessibility Standards mount unit with centerline of towel outlet 48" [1219] maximum Above Finish Floor (AFF). Install unit for general utility with bottom edge 10" [254] to 20-1/2" [521] AFF, Projects 4" (102 mm) from wall.

**KEY FEATURES & SPECIFICATIONS**

- Double-pan construction door has "no-Flex" fiberboard filler for added rigidity and strength
- Door is attached to the cabinet with a 3/16" diameter [Ø5] Heavy-duty, Multi-Staked Stainless Steel Piano Hinge
- 22 gauge Type 304 Stainless Steel - Satin Finish
- Recessed
- 600 C-Fold or 800 Multi-Fold OR 1100 Single-Fold / 18 Gal. Waste Capacity

## **OPERATION & MAINTENANCE**

Towels are self-feeding until supply is depleted. Unit may be reloaded with a partial load in-place and will continue to feed properly. Waste container is emptied manually on cycle determined by maintenance needs. Locked compartment prevents unauthorized access.

## **TECHNICAL INFORMATION / PRODUCT PROPERTIES**

Property	Value
Dimensions	17-1/4" [438] W x 56" [1422] H x 7-1/4" [184] D
Construction	Type 304 Stainless Steel - Satin Finish
Mounting	Recessed
Capacity	600 C-Fold or 800 Multi-Fold OR 1100 Single-Fold / 18 Gal. Waste Capacity

## **INSTALLATION**

Mount unit in wall recess using four (4) #10 self-threading screws (by others) through concealed mounting holes provided. For compliance with 2010 ADA Accessibility Standards, mount unit with centerline of towel outlet 48" [1219] maximum Above Finish Floor (AFF). Note that top of RWO is 3/4" [19] below top of unit.

Rough Wall Opening (RWO) required is 15-3/4" [400] W x 54-1/2" [1384] H x 7-1/4" [184] D minimum

## **WARRANTY**

One (1) Year from date of Invoice