

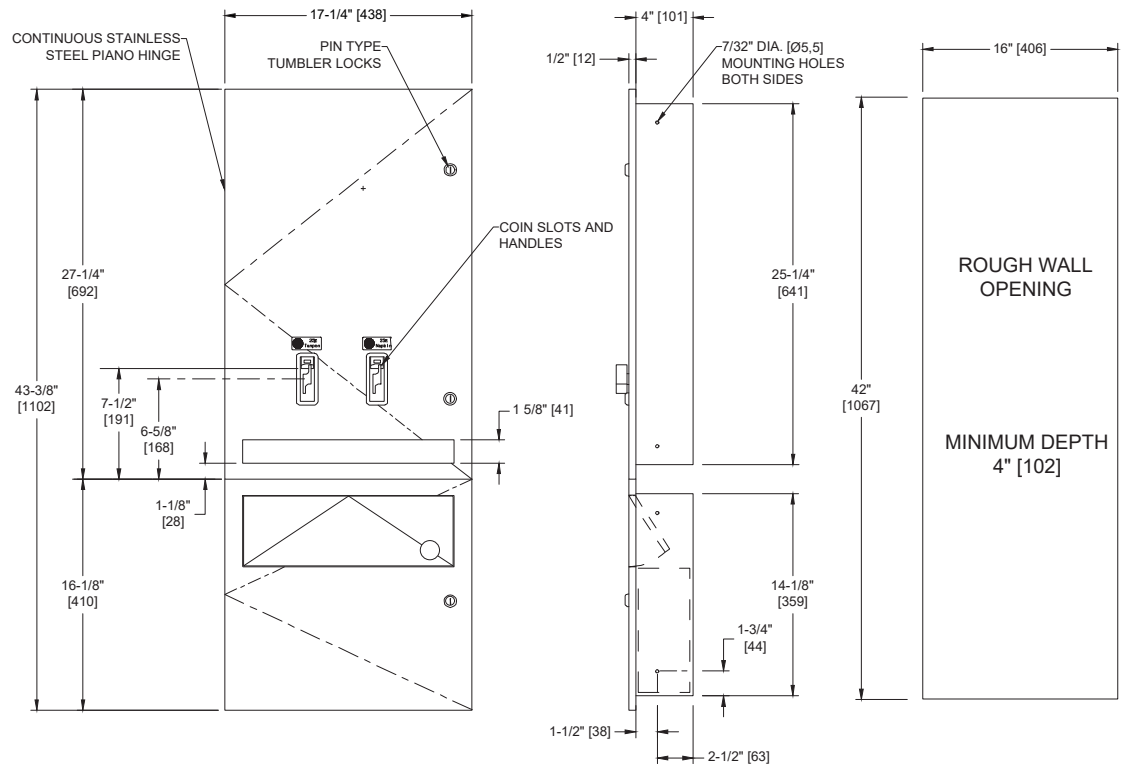
**Dual (15) Napkin/ (23) Tampon Vendor with Disposal – Recessed – 25¢ - 50¢ or Free Operation**

*Feminine Hygiene Vendors and Disposals*

*MasterFormat Section 10 28 13*



Scan for  
Information



**SUSTAINABILITY/LEED**

MR 4.1 (1) MR 6 (1) EQ 4.2 (1)

MR 4.2 (1) EQ 4.1 (1) EQ 4.4 (1)

**NOTE:**  
ALL DIM'S INCH [MM]  
ILLUSTRATION FOR REF ONLY AND NTS  
FOR CLEANING INSTRUCTIONS SEE APPROPRIATE SECTIONS IN  
PRODUCT CARE & MAINTENANCE BULLETIN (PCM) ON ASI WEBSITE

**PRODUCT OVERVIEW**

Dispenses 15 napkins, 23 tampons of specified sizes and has a waste capacity of 1.9 gal (7.2 liters). Doors are held closed with two (2) tumbler locks. Internal coin-box is keyed differently than door locks. Dispensing mechanisms are fastener mounted internally to provide ability to change mechanisms for coinage denomination. Weights for each feed track are supplied. Universal coin mechanism allows for 25¢, 50¢ and Free (no coin) operation. Choose appropriate suffix (-25, -50 or -F).

**KEY FEATURES & SPECIFICATIONS**

- Dual Vendor with Disposal
- 25¢ - 50¢ or Free Operation
- Type 304 Stainless Steel - Satin Finish
- Recessed
- 15 Napkins AND 23 Tampons

- ☐ 04684-TM-25 – allows for 25¢ operation
- ☐ 04684-TM-50 – allows for 50¢ operation
- ☐ 04684-TM-F – allows Free (no coin) operation

## OPERATION & MAINTENANCE

Deposit of specified coin allows operation of dispenser. Napkin and tampon dispensers operate independently. Selected product drops into vending opening after operator actuation. Indicator displays empty condition and blocks coin slot when product is depleted. Unit vend product supply is replenished on cycle determined by maintenance needs by opening door and manually reloading product into dispenser supply tracks. Locked compartment prevents unauthorized access. Track weights **MUST BE USED** to provide positive feed. Waste receptacle is emptied manually on cycle determined by maintenance needs.

## TECHNICAL INFORMATION / PRODUCT PROPERTIES

Property	Value
Dimensions	17-1/4" [438] x 43-3/8" x 4-1/2" [438 x 1102 x 114]
Construction	Type 304 Stainless Steel - Satin Finish
Mounting	Recessed
Capacity	<p>NAPKINS, SINGLES, CARDBOARD-BOXED, SEMIGLOSS FINISH  CAPACITY 15 BOX SIZE 4-1/4" [108] x 3" [76] x 1-1/8" [29]</p> <p><input type="checkbox"/> Stayfree# 4  <input type="checkbox"/> Guards# 247, or 147  <input type="checkbox"/> Kotex# 704, 707, 07010, 07040, 07045, 07300, 07320  <input type="checkbox"/> Pure-Nat# M-4  <input type="checkbox"/> Modess# 4</p> <p>TAMPONS, CYLINDER, CARDBOARD, SEMIGLOSS, CRIMPED ENDS  CAPACITY 23 TUBE SIZE 3/4" diameter [Ø19] x 5-1/4" [134]</p> <p><input type="checkbox"/> Tampax  <input type="checkbox"/> ModessTampons</p>

## INSTALLATION

Unit is mounted in wall recess using #10 self-threading screws (by others). Note that coin slot is 22-15/16" [583] above bottom edge of rough wall opening.

Rough Wall Opening (RWO) required is 16" [406] W x 42" [1067] H x 4" [102] D minimum

## WARRANTY

One (1) Year from date of Invoice